

MANCHESTER
1824

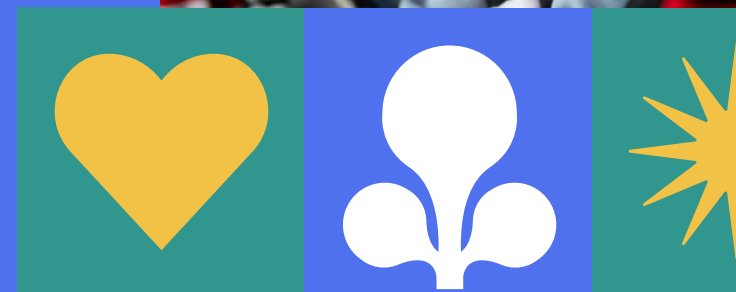
The University of Manchester

STUDENT LIFE AT MANCHESTER

Tallulah Guard

They/them

Student Recruitment Coordinator



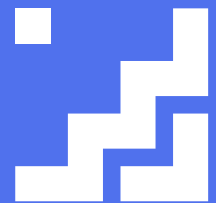
Arriving in Manchester

Getting involved in campus life

Starting your course

Opportunities and support

Graduation and beyond...





THE CITY OF MANCHESTER



The city's symbol is the worker bee, representing Manchester's industrial history

Population of
560,000 - including
100,000 university
students!

One of the
UK's most liveable
cities: affordability,
culture, and
opportunity

Known for its
science and
industry, music,
sport, and
universities



THE UNIVERSITY OF MANCHESTER

The background is a collage of four images: a large tree on the left, the Gothic architecture of The Museum in the center, a red-tiled building with a spire in the upper center, and a modern building with a curved facade on the right. Four colored circles (green, blue, purple, pink) are overlaid on the collage, each containing text. A yellow dashed line with an arrow points from the bottom left towards the bottom right.

Over 40,000
registered
students

Over 400 UG
courses on
offer

Students
from all over
the UK and the
world

One of the
UK's largest
single-site
universities

Campus is only a 20-minute walk
from the centre of Manchester!

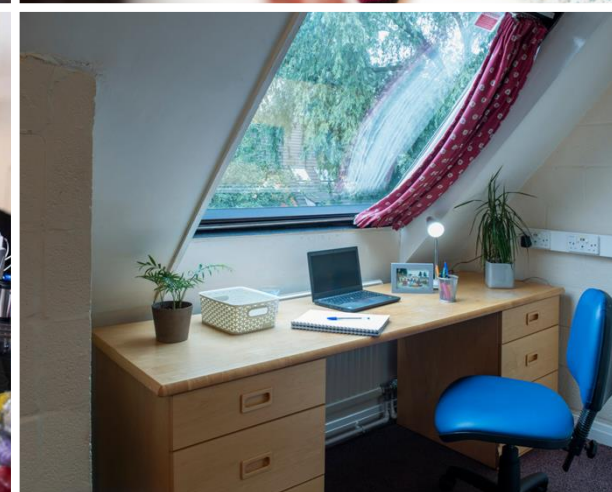
A wide-angle photograph of a modern university campus courtyard. The scene is dominated by multi-story brick buildings with numerous windows. A paved path leads from the foreground into the distance, flanked by greenery and a wooden deck area with a bench on the left. A large red banner with the text "MOVING IN" is superimposed over the center of the image.

MOVING IN

YOUR HALLS OF RESIDENCE

- ☀ Meeting your flatmates
- ☀ Decorating your room
- ☀ Social events
- ☀ ResLife support

Commuter student newsletter to help students living at home get involved and meet each-other



A wide-angle photograph of a busy university campus. In the background, a large, historic stone building with a prominent red-tiled spire and blue roof sections is visible. The foreground is filled with a large crowd of students walking along a paved path. To the left, there are trees with yellow autumn leaves, and to the right, there are lush green trees. A blue banner with a purple flower design hangs from a lamppost on the right. A blue rectangular box with rounded corners is superimposed over the center of the image, containing the text "GETTING INVOLVED" in white capital letters.

GETTING INVOLVED

WELCOME WEEK

- ☀ Introductory lectures
- ☀ Meeting your course-mates
- ☀ Activities and societies fair
- ☀ Getting settled in

Signing up to a club or society's taster session or social is a great way to meet new people!





YOUR COURSE BEGINS...



ACADEMIC LIFE

Getting used to new styles of teaching and meeting your academics

Learning how to get around campus - most students have classes across several buildings!

Your timetable – the amount of module choice and independent study time varies by course

TYPES OF UNIVERSITY STUDY

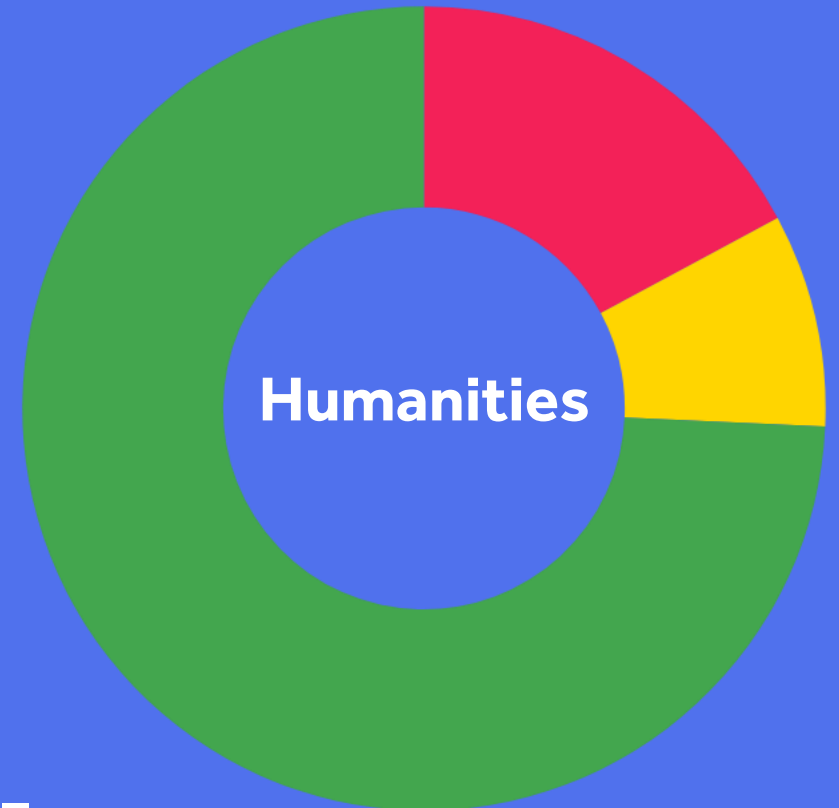


Lectures

Tutorials/
seminars

Independent study

Labs

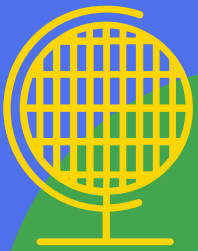


Each course is different –
this is an estimate

An aerial photograph of a city, likely Manchester, showing a mix of historic and modern architecture. In the foreground, a university campus is visible with a large green lawn, several trees, and a winding path. To the right, there are large, multi-story red brick buildings with many windows. In the background, a dense urban skyline is visible under a cloudy sky, featuring various modern skyscrapers and older buildings. A semi-transparent teal banner with white text is overlaid in the center of the image.

TAKING OPPORTUNITIES

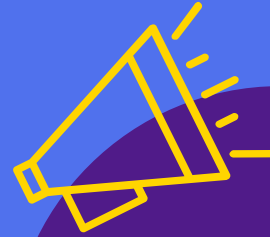
WHAT DO YOU WANT?



Study abroad



Do an
industrial
placement



Take on a
leadership role



Volunteer

There are so many incredible opportunities to expand your university experience –
why not challenge yourself and try something new?

Student Support Hub

Open: Monday - Friday
from 9am - 5pm

Drop-in and speak to
about:

- general student life e
- wellbeing, student s
student service gen
- for Faculty of Science and
Engineering students - advice
and referrals specific to your
subject area

MANCHESTER
24
The University of Manchester

GETTING SUPPORT

NEED SOME SUPPORT?

Academic support and guidance

Disability Advisory and Support Service
(DASS)

Pastoral care and wellbeing support

Financial support and advice

The University of Manchester offers a wide range of support services, so that there's always someone there when you need support or advice


Careers support

Counselling

CAREER

GRADUATION AND BEYOND



The background of the slide features a collage of images. On the left, a woman with dark hair and a grey scarf is smiling and writing in a notebook. On the right, a woman with curly hair is wearing a graduation cap and gown, smiling. In the center, there is a dark purple rounded rectangle containing white text. At the top left, a yellow banner with a black border contains text. The background also includes a banner with the word 'CAREERS' in large, bold, white letters.

You can access the Careers'
Service for up to 2 years after you
graduate!

- ✦ Think about your future with the help of the Careers' Service - support with applications, interviews and more
- ✦ Attend your graduation ceremony and celebrate your achievement with course-mates, friends, and family
- ✦ Become part of the global community of over 500,000 University of Manchester alumni

MAKING YOUR DECISIONS

Before application

- ✦ Would I be happy with the universities and courses I've chosen?
- ✦ What are the requirements of the course, and can I meet them?
- ✦ Email Admissions teams if anything is unclear – don't risk it!

After offer

- ✦ Believe in yourself, but also be realistic!
- ✦ Your insurance choice should be a back-up - make sure the offer is lower than your firm choice.

A photograph of three young women walking along a paved path next to a canal. On the left, a narrowboat with a blue and red stripe is visible. The woman on the left is wearing a red top and a patterned scarf. The woman in the middle is wearing a green top and a tan vest, and she is clapping her hands. The woman on the right is wearing a purple t-shirt and a tan jacket. In the background, there are brick buildings and trees. A large red banner with white text is overlaid on the image.

CONTEXTUAL ADMISSIONS

CONTEXTUAL ADMISSIONS – WHAT IS IT?

All students should have a fair chance to succeed at university, so we review UCAS applications in the context of your personal circumstances

We take into account:

- ✶ Your home postcode
- ✶ The performance of the schools where you did your GCSEs and A Levels (or equivalent)
- ✶ If you've been in care for more than 3 months
- ✶ If you have refugee status

1-2 grade reduced offer*

Access schemes

THE PERSONAL STATEMENT

- ✦ We'll take your contextual flag in to account when reviewing your personal statement
- ✦ For example, we'll consider that you may not have had the same access to extracurricular activities or work experience

However...

- ✦ It's still important to write the best personal statement you can
- ✦ It's still important you check course requirements e.g. work experience

WHAT YOU CAN DO NOW

Am I eligible?

Use our eligibility tool to see whether you are eligible for a contextual offer or any additional consideration.

Eligibility tool – 2025

Check your eligibility for a contextual offer

Home / Study / Undergraduate / Widening participation



Manchester Access Programme

A programme for local Year 12 students.



Manchester Distance Access Scheme

A pre-university scheme for offer holders.



The Arthur Lewis Assignment

A pre-university course for the social sciences.



Contextual admissions

Eligibility for contextual admissions based on individual circumstances.

Check your eligibility for our access schemes

Check your eligibility for similar schemes at other universities you're interested in

A photograph of three young adults in a park setting. On the left, a man with short dark hair, wearing a black vest with green and white stripes over a yellow and black shirt, is smiling and holding the handlebars of a bicycle with a large wicker basket. In the center, a woman with long dark curly hair, wearing a bright red jacket over a pink top and blue jeans, is gesturing with her hands while talking. On the right, another woman with long dark hair, wearing a brown leather jacket and a green patterned skirt, is looking towards the other two. They are standing in front of a black metal fence with green foliage in the background.

CHAT WITH OUR STUDENTS

Visit Unibuddy via our website to chat with students currently studying at Manchester!

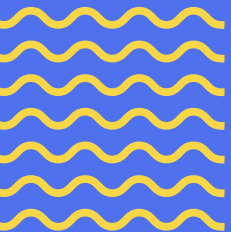


UNIBUDDY

MANCHESTER OPEN DAYS 2025

 21/28 JUNE

Visit the University of Manchester...
Bookings open from April 2025



MANCHESTER
1824

The University of Manchester

ANY QUESTIONS?