

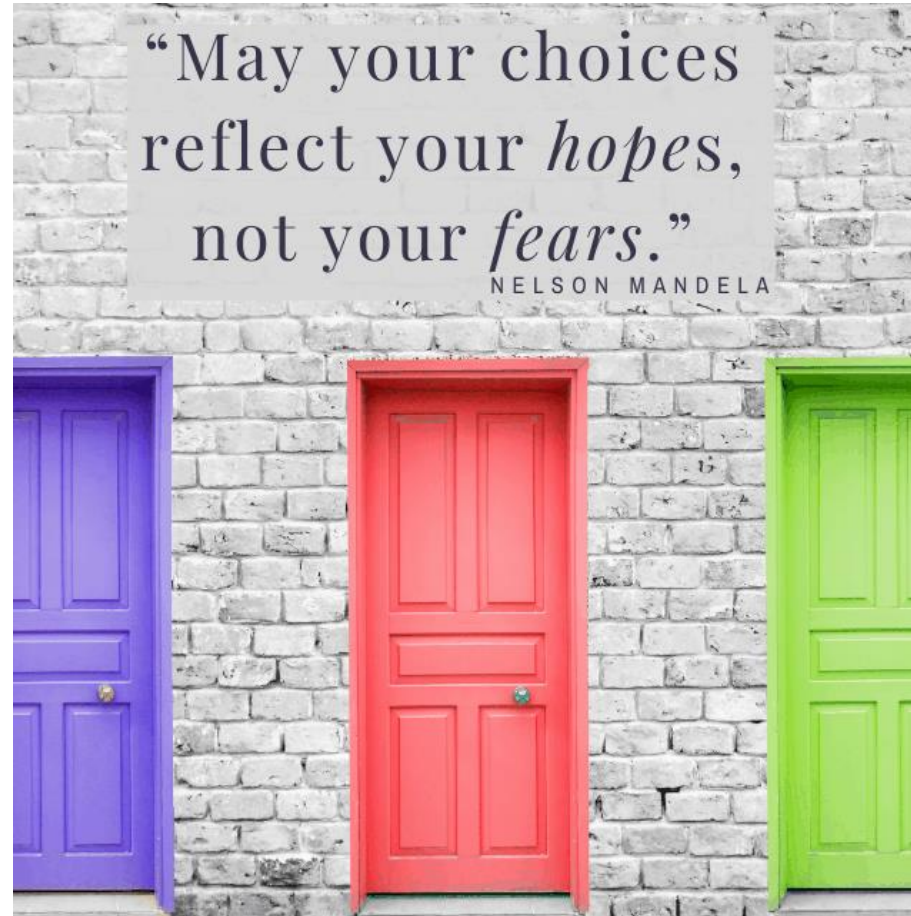
YOUR NEXT STEPS

Year 11 Student and Parent Information Evening

Ms Rhodes, Mrs Morris and Mr Wright

Valuing Everyone Caring For Each Other Achieving Excellence

The Decision is Yours



Choices

Vocational and Technical Qualifications

Applied Qualifications

A Levels

T Levels

Apprenticeships and Traineeships

Your options Post-16 do not just comprise A Levels – there are various routes you can follow

Questions to ask yourself

- What do I love and enjoy?
- What am I good at?
- Do I want a fresh start?
- Do I want to continue at Tipton or try somewhere else?
- Do I want high levels of independence? Am I self motivated?
- Do I want a practical course?
- What career do I eventually aspire to?

Pause and Reflect

- Don't rush
- Don't just do what your parents want you to do
- Don't just follow your friends – you'll make new ones
- Take your time and consider all options
- Visit everywhere and talk to people
- Explore different websites
- Take advantage of your interview with an independent careers advisor
- Talk to your teachers
- Ask questions
- Enjoy this opportunity to craft your own path

Careers Interviews

Ms James



Who am I?

- Carol James, independent careers advisor
- Providing careers guidance in Tapton since 2011
- Masters in Careers Guidance
- Registered career development professional and a member of the Career Development Institute
- My website: www.caroljames.co.uk
- Independent – not a staff member – therefore my advice is impartial and in the best interest of the student
- Quality assured external to the school and GDPR compliant – privacy statement on request
- The Careers Interview Process is confidential though information on outcomes shared with school

Careers Interviews

- 40 minutes, during school time,
- They take place between September and January
- One to one
- Career action plan written at the end of the interview – student sees and signs if they agree the content
- Student has career action plan to take home to share with parents
- Copy to school if student agrees
- Action points – open evenings, applications to be made, research to be carried out

Careers Interviews

- Student's ideas are central to the discussion
- Exploration of the career/study area, what involved
- Planning route through education and training to meet entry requirements for the role
- May broaden ideas if student would like this
- May introduce ideas if student would like this
- May look at where a subject could lead

Careers Interviews

- Most students make more than one application
- Back up plans discussed, strongly advised to ensure student has choices in the summer at results time
- Career action plan will detail dates of open evenings, deadlines for applications
- Entry requirements for courses and apprenticeships discussed
- Links to websites and programmes for further information
- Ongoing help in school as and when the student needs it
- Support at Exam Results time

Sheffield Labour Market

- Wide range of sectors, professions and businesses in the Sheffield City Region
- School is supported by Enterprise Advisors through the Sheffield City Region Enterprise Advisor Network
- Employer and work related activity in school to help students understand the labour market and how to make informed decisions about their career choices
- Apprenticeships in a range of sectors – a small number of students progress into apprenticeships each year

Arranging a Careers Interview

- Mrs Dunn arranges careers interviews in school
Contact sdunn@taptonschool.co.uk
- I can be contacted on careers@taptonschool.co.uk
- Ask your teenager to show you the career action plan produced in the careers interview

Why Sixth Form?

Why Sixth Form?

You want to study three or four subjects to A Level – a higher level than GCSE - often with a view of studying one of these subjects at university.

Examinations are your preferred method of assessment. There are limited options to complete coursework at A Level with most subjects assessed with examinations at the end of two years.

Students typically leave Sixth Form for University, Higher Apprenticeships or Employment.

Why Tapton Sixth Form?

Tapton offers a very broad curriculum of 28 subjects. This allows our students to move on to a wide variety of Post-18 destinations.

Around 90% of students at Tapton move on to University and the remaining 10% move on to Higher Apprenticeships, Training and Employment.

We have a very vibrant community with students joining us not only from Tapton but also from over 30 different schools in Sheffield and beyond.

Your Choices

There are a wide range of Sixth Form options in Sheffield. You may want a change from Tapton or be attracted to a particular course on offer at another Sixth Form.

Sixth Form and College Open Evenings

All Saints School	Saturday 6th November
Forge Valley School	Thursday 11th November
High Storrs School	Wednesday 3rd November
King Ecgbert School	Thursday 18th November
King Edward VII School	Thursday 11th November
Meadowhead School	Thursday 4th November
Notre Dame	Saturday 13th November
Sheffield Park Academy	Wednesday 1st December
Silverdale School	Thursday 21st October
Tapton School	Tuesday 23 rd November
Sheffield College	Thursday 21 st October, Wednesday 24 th November
UTC City Centre	Wednesday 10 th November, Wednesday 12 th January
Rotherham College	Wednesday 24 th November, Saturday 15 th January
Thomas Rotherham College	Wednesday 10 th November, Thursday 3 rd February



The Sheffield College

GO FURTHER

About us

What we offer:

A huge range of vocational and academic courses

Multi-million pound facilities

A vibrant student community

Opportunities to progress and succeed

Tutors who are industry experts



City Campus



Hillsborough Campus



Olive Grove Campus



Peaks Campus



Courses



Study
Programmes

A Levels



Apprenticeships

Study programmes

Key features:

Full-time study

Job-specific technical qualifications

Develop your skills in facilities that are the same as in the workplace

Career experience

Levels:

→ Entry
No formal qualifications

→ Level 1
4 GCSE's at grade 2, including English Language

→ Level 2
4 GCSE's at grade 3, including English Language

→ Level 3
4 GCSE's at grade 4 or above plus a grade 4 or above in English Language



Animal Care

Sports & Fitness

Catering & Hospitality

**Childcare &
Education**

Performing Arts & Music

**Creative Media,
Journalism &
Photography**

**Aviation, Tourism &
Events**

Health & Social Care

COURSES

Motor Vehicle

Engineering

IT & Computing

**Science, Dental &
Pharmacy**

**Uniformed Public
Services**

**Construction & Building
Services**

Hair & Beauty

**Design and
Visual Arts**

**Horticulture &
Floristry**

Business



A Levels at The Sheffield Sixth Form

Key features:

Full-time study

Study 3 or 4 subjects to tailor your learning to your career pathway

Exam and coursework assessments

Exclusive facilities in the city centre

Level	Typical entry requirements
3 A Levels	5 GCSEs at grade 4 or higher, including GCSE English Language and GCSE Maths
4 A Levels	6 GCSEs at grade 6 or higher, including GCSE English Language and GCSE Maths

Find out more: <https://sixthform.sheffcol.ac.uk/>

Apprenticeships

Key features:

Employed in a full-time job

Typically attend college one day a week to complete your qualification

Learn on the job

Earn a wage

Apprenticeships +



Level	Typical entry requirements
Intermediate Apprenticeship	4 GCSEs of a minimum grade 3, including a minimum grade 3 in GCSE English Language and GCSE Maths
Advanced Apprenticeship	4 GCSEs of a minimum grade 4, including a minimum grade 4 in GCSE English Language and GCSE Maths



Student experience

VI The
Sheffield
Sixth Form

"I chose The Sheffield College after being impressed by their Open Day and facilities. The Learning Resource Centre and dedicated Sixth Form area really stood out to me."

Raphael Nwose,
Former A Level student



The
Sheffield
College

"Completing this qualification ensured that I was able to progress onto a Degree in Nutrition."

Alex Toulson
Former Access to HE - Health Science student



"IT HAS BEEN A PLEASURE TO STUDY AT THE SHEFFIELD COLLEGE BECAUSE OF THE FANTASTIC TUTORS AND STAFF."

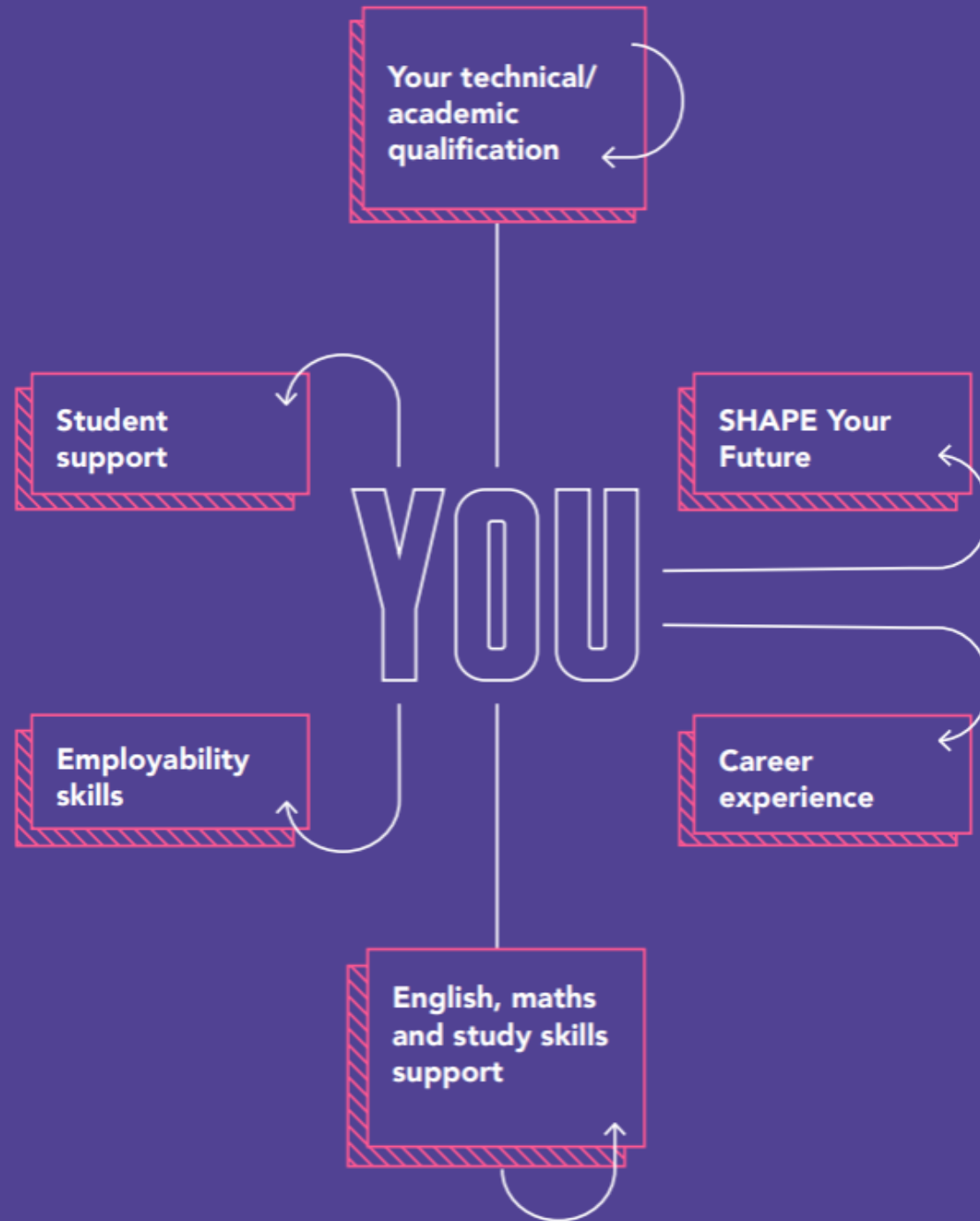
Julian Yuste
BTEC Level 3 Extended Diploma in Electrical & Electronic Engineering
Result D* D* D*



"I LOVED THE DIVERSITY IN THE CLASSROOM AND THE RANGE OF MODULES WE STUDIED."

Irene Muamba
Science Level 3
Result D*DD





Opportunities at College

**SHEFFIELD COLLEGE
PHOTOGRAPHER'S STORY OF
FOOTBALL SCORES COMPETITION
SUCCESS**



**STUDENT WINS A NESTLÉ TOQUE D'OR
GRAND FINALS PLACE**



**FLORISTRY STUDENT CELEBRATES
INDUSTRY AWARD WIN**



**STUDENTS SHOOT FOR THE STARS
WITH SPACE SCIENCE WORK
EXPERIENCE PROJECT**



**THE SHEFFIELD COLLEGE STUDENT
WINS NEW LGBTQ+ AWARD**



**SHEFFIELD COLLEGE STUDENT
CELEBRATES £10,000 THEATRE
INDUSTRY BURSARY WIN**



**STUDENTS PLAY THEIR PART IN TOKYO
2020 PARALYMPICS GAMES**



**EXCEPTIONAL STUDENTS CELEBRATED
AT AWARDS CEREMONY**

The
Sheffield
College

**STUDENT
CELEBRATION
AWARDS 2021**

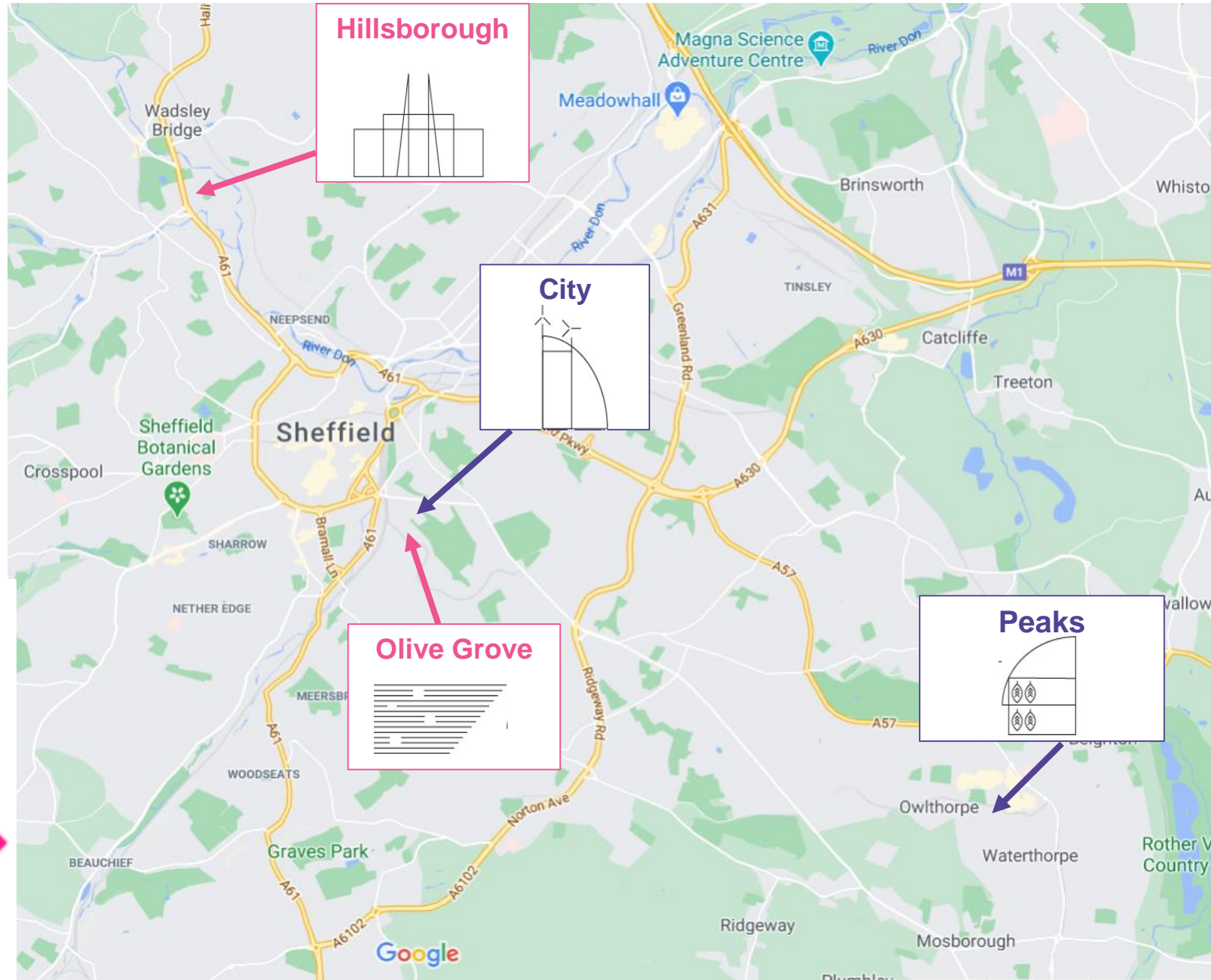


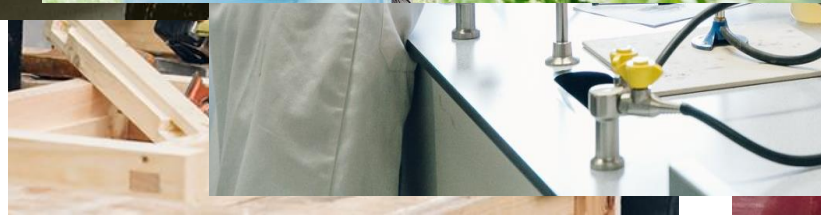
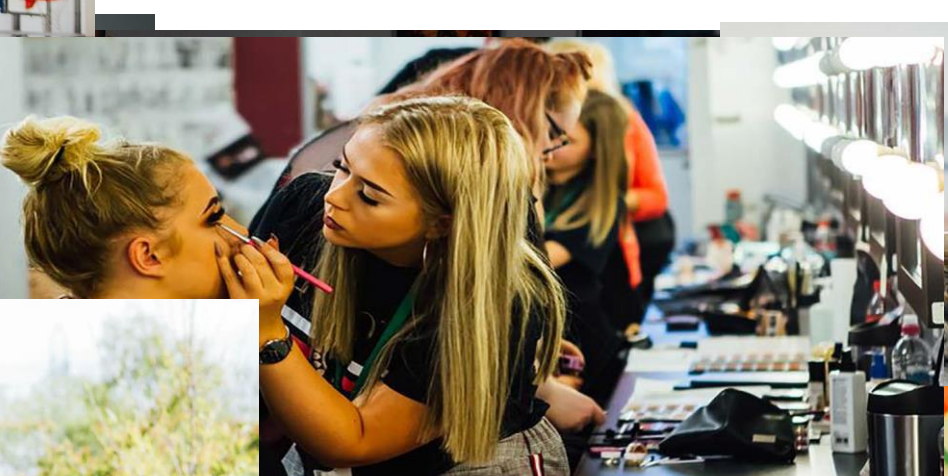
Transport

All campuses close to public transport

16-18 travel pass

www.travelsouthyorkshire.com





How to Apply



1. Visit us

Come along to one of our Open Evenings

2. Apply online

Make an application through Sheffield Progress or through our website.

3. Attend an interview

Come along to meet us and make sure the course is the right fit for you.

4. Accept your offer

We will make you an offer based on your predicted grades.

Prospects



Open Days

SCE@sheffcol.ac.uk

**Thursday
21st
October
4pm - 7pm**

**Wednesday
24th
November
4pm - 7pm**

Apprenticeships

- Follow the Education and Skills Funding Agency on Social Media
- Search for apprenticeships on gov.uk
- Amazing Apprenticeships website - <https://amazingapprenticeships.com>
- Contact: Emily Hornblower – Apprenticeship Advisor - emily.hornblower@sheffield.gov.uk

Apprenticeship offers

- A vast range of employers offer apprenticeship roles such as Sky, ITV and ASOS.
- Recruitment updates are shared on company websites and social media platforms.
- Around half of apprenticeships started are with larger well known companies, but the remainder are set up with local companies.
- Apprenticeships with both large, well-known companies and smaller employers are known to enable fast-track career progression, so don't discount the prospect of working with a smaller company.

Finding an apprenticeship

- Government portal = Find an apprenticeship
- Specific websites of particular companies and employers
- Careers pages on Social Media
- Family members
- Friends or Family Friends
- Job Search Sites
- [apprenticeships.gov.uk](https://www.apprenticeships.gov.uk)